



INDUSTRIALE/LOGISTICO IN AFFITTO/VENDITA

Musile di Piave (VE)

COD. CA0409

Affitto/Vendita: € 378.000



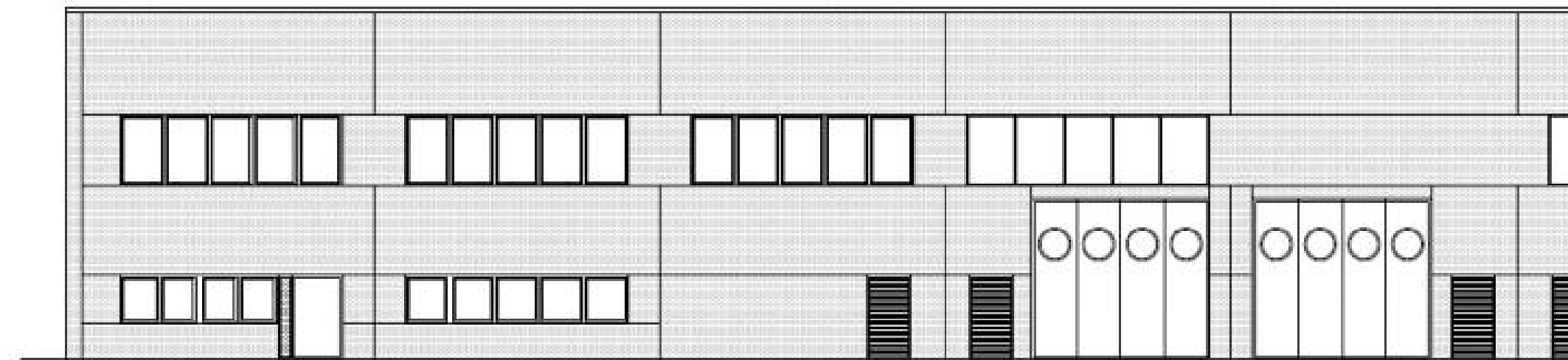
Vendesi capannoni di nuova costruzione, di varie metrature con aree scoperte di proprietà. Altezze utili sotto trave mt 8,60. Vicinanze casello autostradale. Da mq 500 a mq 10.000.

Informazioni immobile

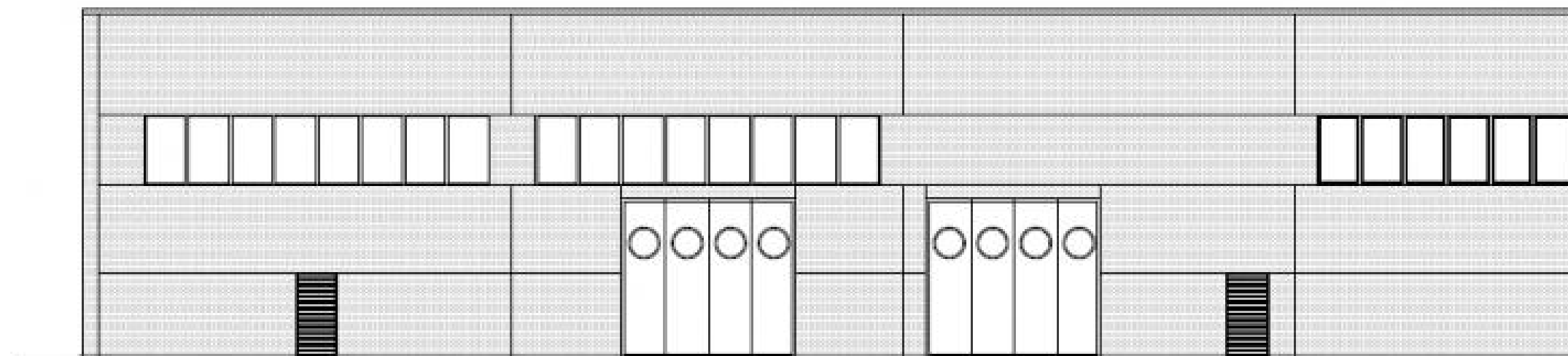
CAP: 30024

Stato conservazione: Ottimo

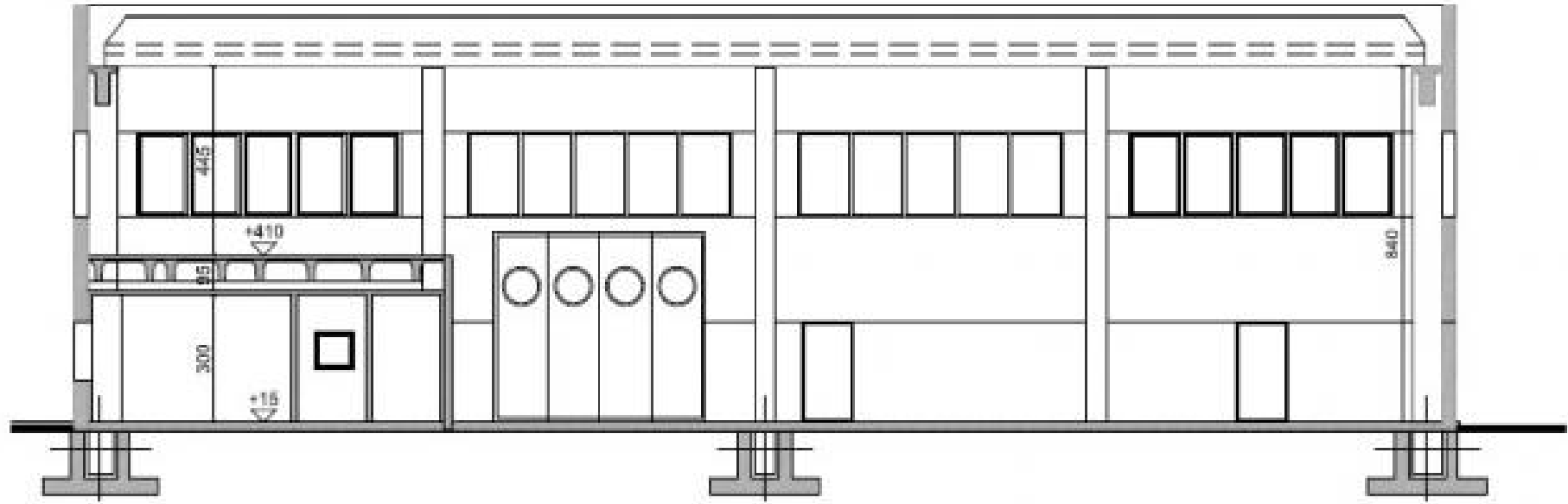
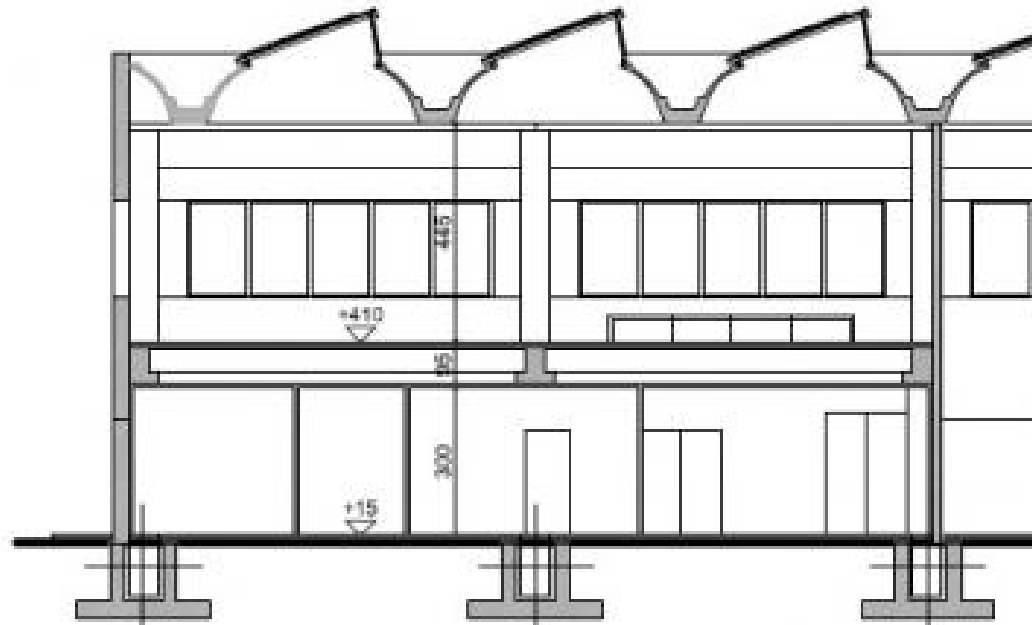


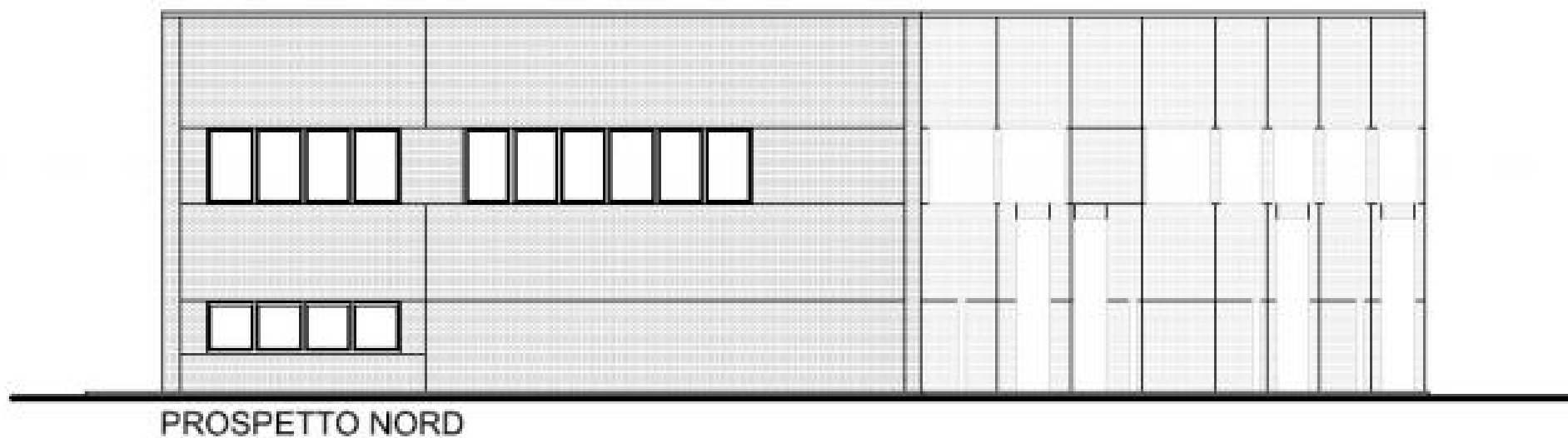
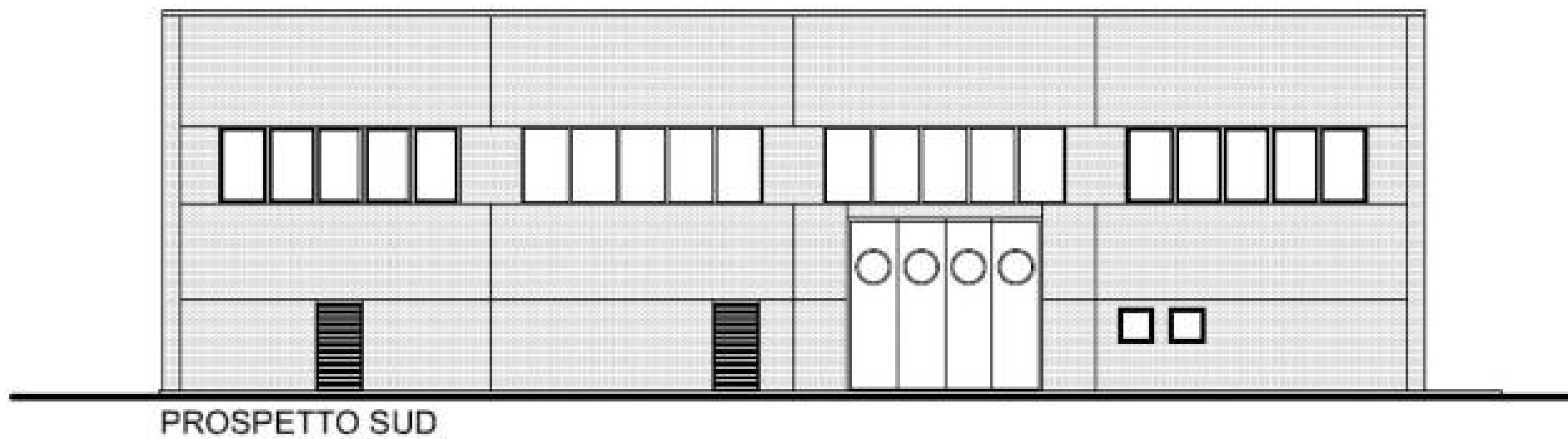


PROSPETTO EST



PROSPETTO OVEST







Dal Zilio & Partners Sas

Viale Monte Grappa n. 28/A
31100 - TREVISO

info: +39 0422 230042

fax: +39 0422 296205

mobile: +39 393 2288822
+39 348 8089604

commerciale@dalzilio.com
www.immobili-commerciali.eu